

MIDNIGHT BLUE

KENNY BURREL SOLO

FROM "MIDNIGHT BLUE" (1963)

♩ = 140 SWINGS 8THS

1:01

6

10

14

18

22

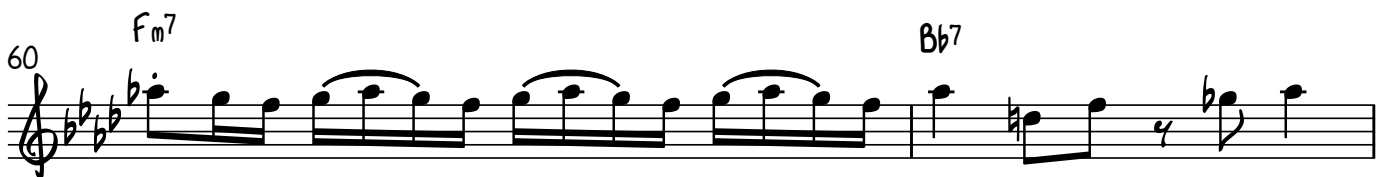
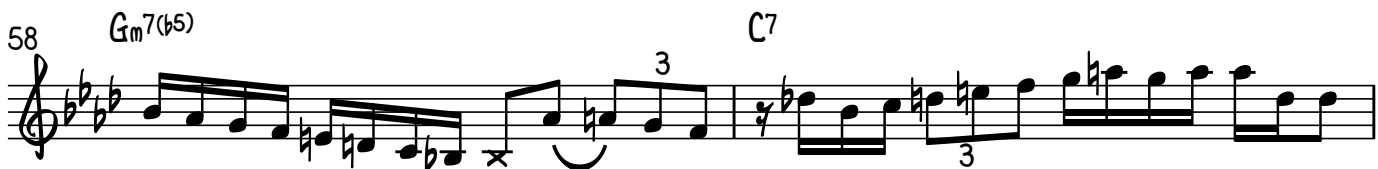
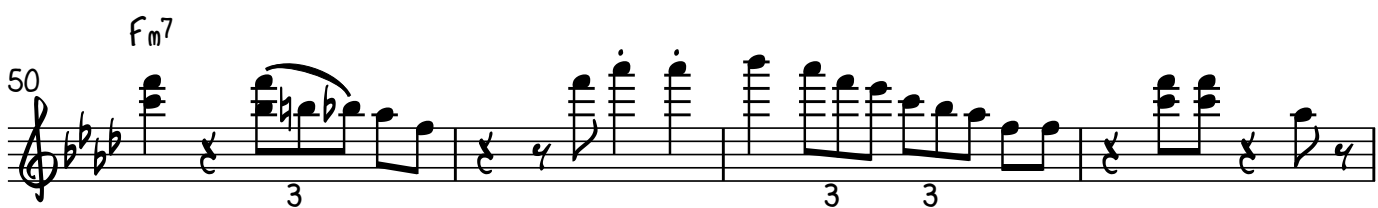
26

30

34

Chord symbols: $Fm7$, $Gm7(b5)$, $C7$, $Bb7$, $Dbmaj7$, $Db7$, $Fm7$, $C7$.

2



74 $Gm7(b5)$ $C7$ $Fm7$ $Bb7$ 3

78 $Dbmaj7$ $Db7$ $Fm7$ $C7$

The image shows a musical score for two staves. The first staff, labeled 74, contains four measures with the following chords: $Gm7(b5)$, $C7$, $Fm7$, and $Bb7$. The second staff, labeled 78, contains four measures with the following chords: $Dbmaj7$, $Db7$, $Fm7$, and $C7$. The score includes various musical notations such as eighth notes, rests, and chord symbols.