

THE THEME

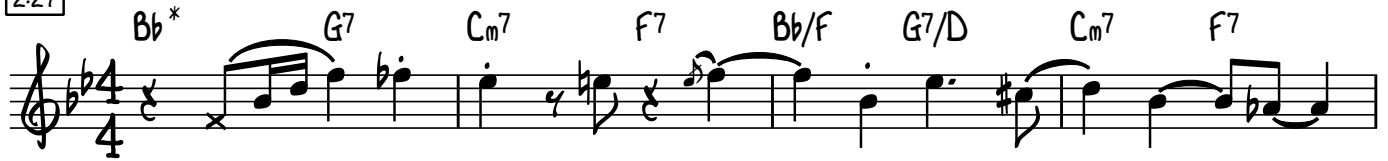
KENNY BURRELL SOLO

FROM "BASS ON TOP" BY PAUL CHAMBERS (1957)

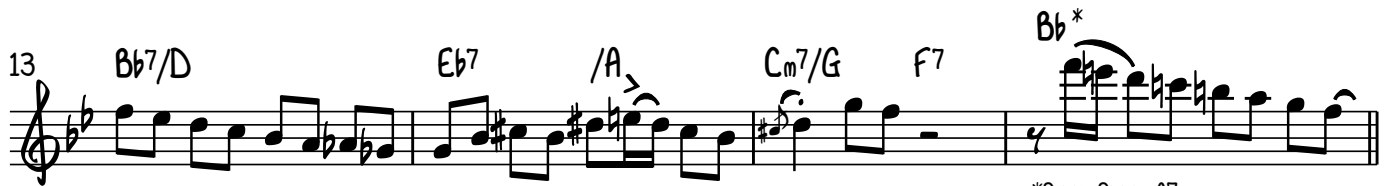
♩ = 210 SWING 8THS

MILES DAVIS

2:27



*IMPLIED/BASS TACET 2 BARS



*PIANO PLAYS A7



33 $B\flat$ G^7/D $Cm^7/E\flat$ F^7 $B\flat/D$ G^7/B $Cm^7/E\flat$ F^7

37 $B\flat/D$ $E\flat^7$ $/A$ $B\flat$ F^7

41 $B\flat$ G^7 Cm^7 $F^7/E\flat$ $B\flat/D$ G^7/B $Cm^7/E\flat$ F^7/A

45 $B\flat^7/F$ $E\flat^7$ $/A$ $B\flat$

49 D^7

51 G^7

53 C^7 Cm^7 F^7

57 $B\flat$ G^7/D Cm^7 F^7 $B\flat/D$ G^7/B $Cm^7/E\flat$ F^7

61 $B\flat^7$ $/D$ $E\flat^7$ $E\flat^7$

63 $B\flat$ $Cm^7/E\flat$ F^7 $B\flat$

LAZY SLIDE